



NON RECOGNISED COLOURS

The Bulldog Breed Council

Gwen E.Biddle-Edwards.
21 Mill Lane
Ramsey
Nr. Huntingdon
Cambridgeshire
PE26 1EF
Phone: 01487 814 331
Site: www.bulldogbreedcouncil.co.uk

The Breed Standard says:-

Whole or smut, (i.e. whole colour with black mask or muzzle). Only whole colours (which should be brilliant and pure of their sort) viz., brindles, reds with their various shades, fawns, fallows etc., white and pied (i.e. combination of white with any of the foregoing colours). Dudley, black and black with tan highly undesirable.

Any colours not mentioned above are not the correct .

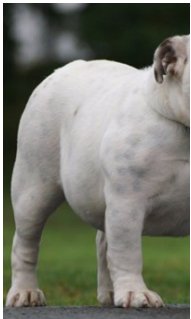
The following are the correct colours



RED



RED/WHITE PIED



WHITE



WHITE WITH TICK-



FAWN



BRINDLE (can be fawn brindle)

Black, Black & Tan, Black/Tan/ White.
Blue. Blue & any other colour.
Dudley ie liver coloured nose, lips, eyelid, tongues and pads.
Chocolate.
AND
any other colour not listed in the breed standard approved list.

THESE COLOURS ARE INCORRECT
And do not follow the Breed Standard

